

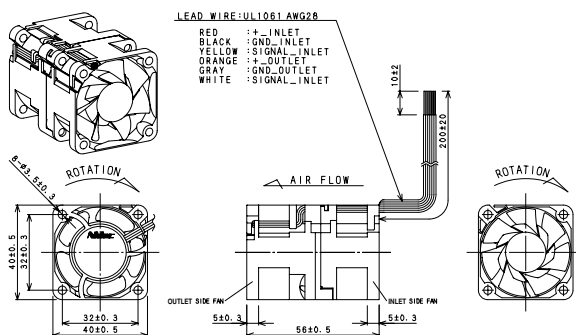
# 40×40×56mm Series



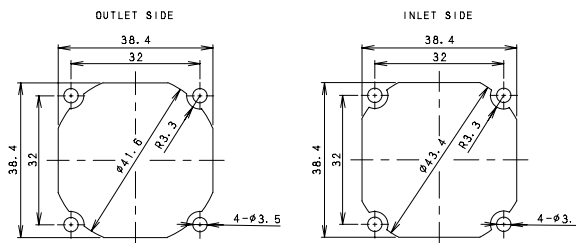
使用材料/  
ハウジング: プラスチック (UL:V-0)  
インペラー: プラスチック (UL:V-0)  
軸受構造/ボールベアリング  
保護方法/電流制限  
使用温度範囲/−10°C~70°C  
質量/90g

MATERIAL/  
HOUSING: Plastic (UL:V-0)  
IMPELLER: Plastic (UL:V-0)  
BEARING/ Ball Bearings  
PROTECTION/ Current limit  
OPERATING TEMP/ −10°C~70°C  
MASS/ 90g

## ■外形図 External Dimensions



## ■取り付け穴参考寸法 Panel Out - Cuts



## ■特性 Major Characteristic Parameters

### ●フィードバック制御有り Feedback Control Design

| Model         | Rated Voltage | Operating Voltage range | Rated Current  | Maximum Air Flow    |      | Maximum Static Pressure |                      | Rated Input Power | Sound Level         | Rated Speed       |
|---------------|---------------|-------------------------|----------------|---------------------|------|-------------------------|----------------------|-------------------|---------------------|-------------------|
|               | V             | V                       | A <sup>①</sup> | m <sup>3</sup> /min | CFM  | Pa                      | inchH <sub>2</sub> O | W <sup>①</sup>    | dB (A) <sup>②</sup> | min <sup>-1</sup> |
| R40W12BHAC-0* | 12            | 7.0~13.8                | 1.10           | 0.78                | 27.5 | 337                     | 1.36                 | 13.2              | 59.5                | 13800/12300       |
| R40W12BGAC-0* | 12            | 7.0~13.8                | 1.75           | 0.92                | 32.5 | 485                     | 1.95                 | 21.0              | 64.0                | 16000/14500       |

### ●フィードバック制御無し Without Feedback Control Design

| Model         | Rated Voltage | Operating Voltage range | Rated Current  | Maximum Air Flow    |      | Maximum Static Pressure |                      | Rated Input Power | Sound Level         | Rated Speed       |
|---------------|---------------|-------------------------|----------------|---------------------|------|-------------------------|----------------------|-------------------|---------------------|-------------------|
|               | V             | V                       | A <sup>①</sup> | m <sup>3</sup> /min | CFM  | Pa                      | inchH <sub>2</sub> O | W <sup>①</sup>    | dB (A) <sup>②</sup> | min <sup>-1</sup> |
| R40W12BHAC-5* | 12            | 7.0~13.8                | 1.10           | 0.78                | 27.5 | 430                     | 1.73                 | 13.2              | 59.5                | 13800/12300       |
| R40W12BGAC-5* | 12            | 7.0~13.8                | 1.75           | 0.92                | 32.5 | 600                     | 2.41                 | 21.0              | 64.0                | 16000/14500       |

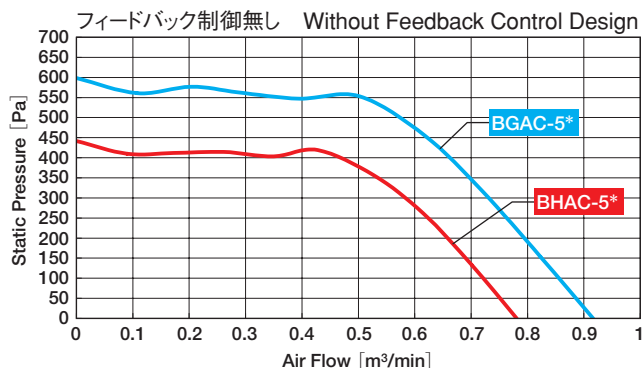
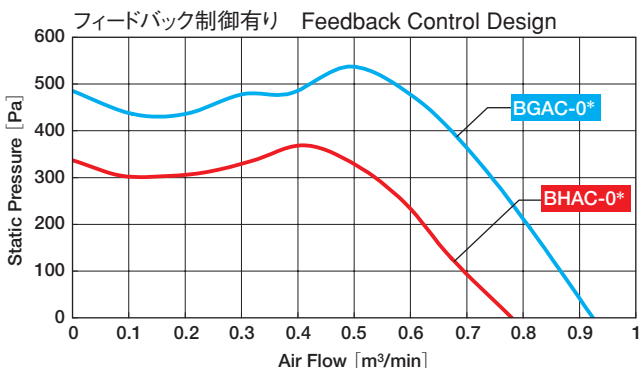
① 実効値  
② 吸込側表面から1mにて測定

① RMS value  
② Sound Level is measured at the distance of one(1)meter from the axis of fan intake.

(注) データは定格電圧での代表特性です。  
電源PWMは保証外とします。  
電源の電圧リップルは定格電圧の±5%以下とします。  
上記以外の定格電圧については、個別にお問い合わせ下さい。

(Note) The data shows typical value at rated voltage.  
Insurance does not apply to power supply PWM.  
The range of voltage ripples for power supply is ±5%.  
Contact us on any rated voltage not listed above.

## ■特性グラフ P-Q Curve



本製品の仕様は改良などのため、予告無しに変更することがございます。  
Specification is subject to change for improvement without notice.